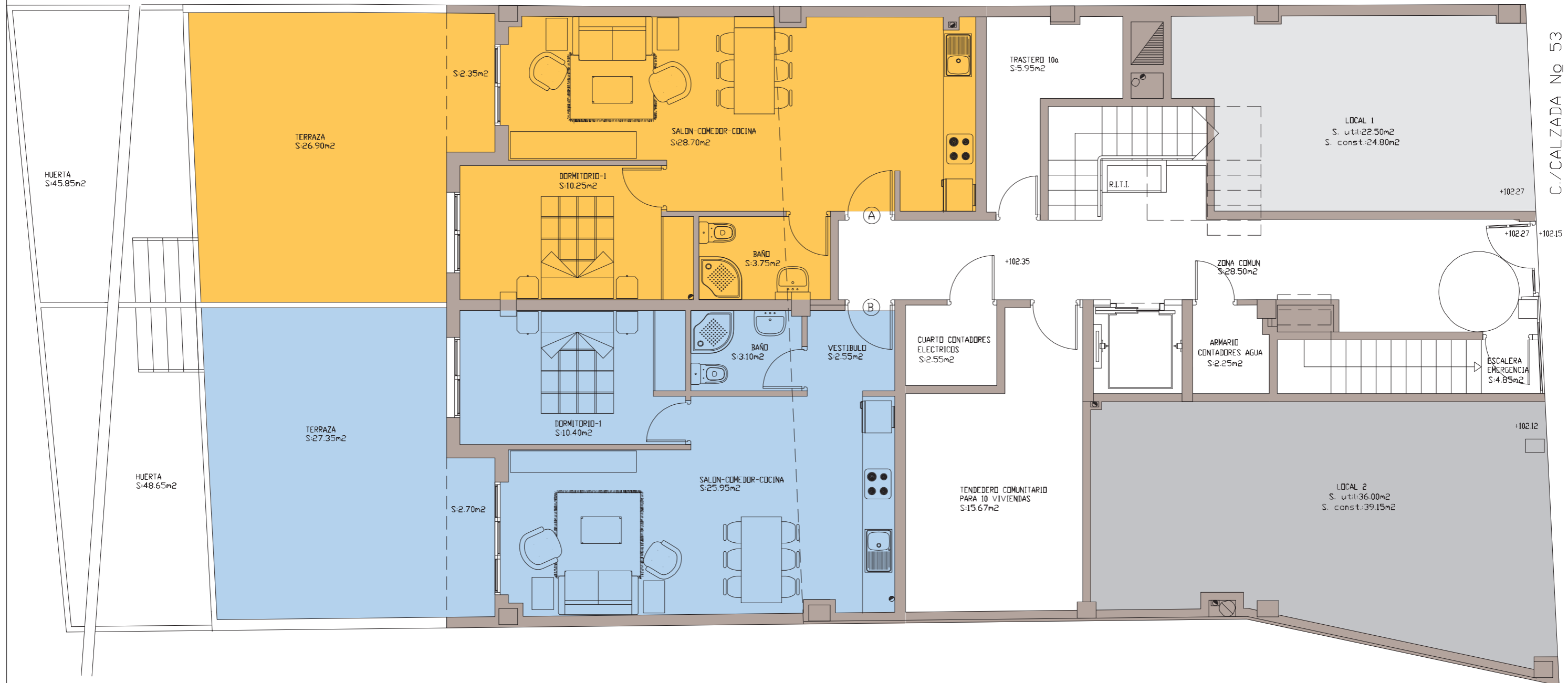


PLANTA BAJA



PLANTA BAJA

CUADRO DE SUPERFICIES			
VIVIENDA	SUP.CONSTRUIDA	SUP. UTIL	TERRAZAS
A (1D)	51.15m ²	45.05m ²	26.90m ²
B (1D)	50.75m ²	44.70m ²	27.35m ²
LOCAL 1	24.80m ²	22.50m ²	
LOCAL 2	39.15m ²	36.00m ²	
TRASTEROS	7.55m ²	5.95m ²	
Z.COMUN	64.40m ²	45.45m ²	
SUP. TOTAL	237.80m ²	199.65m ²	